

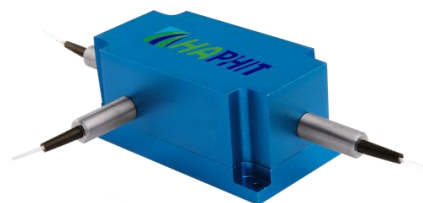
## 830-850nm 3-port Optical Circulator

### FEATURES

- ☑ High Isolation
- ☑ Low Insertion Loss
- ☑ Epoxy-Free Optical Path
- ☑ High Reliability and Stability
- ☑ Low Profile Packaging

### APPLICATIONS

- ☑ Fiber Optic Amplifiers
- ☑ Fiber Optic Instruments
- ☑ WDM Systems
- ☑ Dispersion Compensation
- ☑ Light Routing

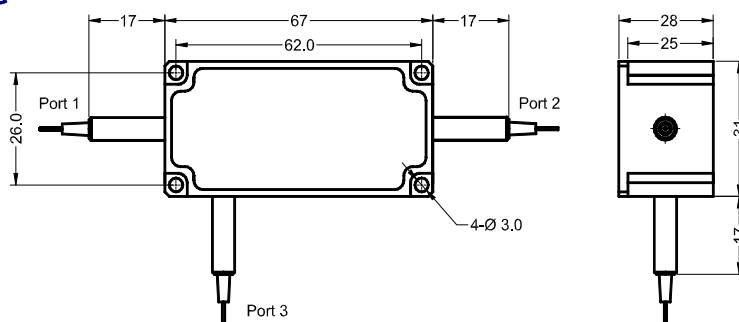


### SPECIFICATIONS

Parameter	Unit	Value
Working Wavelength	nm	830±10, 850±10
Insertion Loss@23°C	(Typ.)	1.0
	(Max.)	1.6
Isolation@23°C	(Typ.)	22
	(Min.)	18
PDL	dB	≤0.2
Optical Return Loss	dB	≥45
Cross Talk	dB	≥45
Fiber Type	-	HI780 Fiber or 780HP Fiber
Fiber Tensile Load	N	5
Maximum Optical Power (CW)	W	0.3, 0.5, 1, 2, 3, 5, 10, 15, 20
Operating Temperature	°C	0~50
Storage Temperature	°C	-10~65

- Note:**
1. Specifications are for device without connectors; Specifications may change without notice.
  2. To add connectors, IL is 0.7dB higher, RL is 5dB lower.
  3. Only guarantee 1W continuous wave (CW) power thru testing for connectors added.
  4. Devices for higher optical power or with other type fiber or consigned fiber are also available.
  5. Package size may be different for different optical power and fiber types.

### DIMENSION DRAWING



### ORDERING INFORMATION (PN)

FCIR-	NNN	-3HP NN	- (NN)	-(C)	C	NN	- CC/CCC
Center Wavelength	Optical Power	Optical Power P2	Fiber Type	Fiber Sleeve	Fiber Length	Connector Type	
830-830nm	03- 300mW	1- 1W	7- 780HP Fiber	B- Bare fiber	05=0.5m	N=Without Connector	
850-850nm	1- 1 Watts	2- 2W	Blank for HI780 Fiber	L- Loose Tube	10=1.0m	FC/APC=FC/APC Connector	
	3- 3 Watts	5-5W		2=2mm Cable	15=1.5m	LC/PC=LC/PC Connector	
	10- 10 Watts	Blank for P2=P1		3=3mm Cable	20=2.0m	SC/UPC=SC/UPC Connector	