

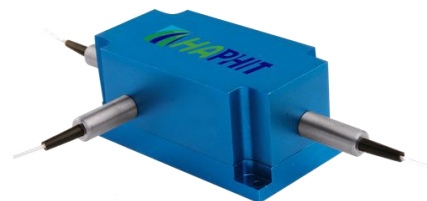
960~1000nm 3-port Optical Circulator

FEATURES

- High Isolation
- Low Insertion Loss
- Epoxy-Free Optical Path
- High Reliability and Stability
- Low Profile Packaging

APPLICATIONS

- Fiber Optic Amplifiers
- Fiber Optic Instruments
- WDM Systems
- Dispersion Compensation
- Light Routing

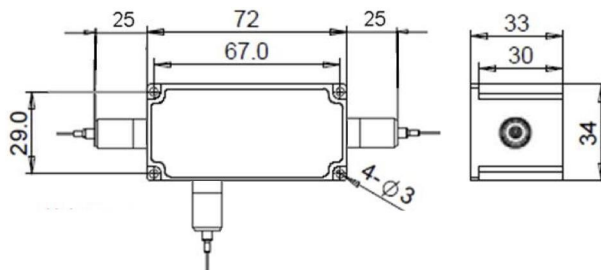


SPECIFICATIONS

Parameter	Unit	Value
Working Wavelength	nm	975±10, 980±10, 990±10, 1000±10
Insertion Loss@23°C	(Typ.)	0.9
	(Max.)	1.6
Isolation@23°C	(Typ.)	25
	(Min.)	20
PDL	dB	≤0.2
Optical Return Loss	dB	≥45
Cross Talk	dB	≥45
Fiber Type	-	HI1060 Fiber or 10/125um SC Fiber (E) 10/125um DC Fiber (O), 15/130um DC Fiber (W) 20/130um DC Fiber (Q) or 25/250um DC Fiber (R)
Fiber Tensile Load	N	5
Maximum Optical Power (CW)	W	0.3, 0.5, 1, 2, 3, 5, 10, 15, 20, 25, 30, 50, 60, 80, 100
Operating Temperature	°C	0~50
Storage Temperature	°C	-10~65

- Note:**
1. Specifications are for device without connectors; Specifications may change without notice.
 2. To add connectors, IL is 0.5dB higher, RL is 5dB lower.
 3. Only guarantee 1W continuous wave (CW) power thru testing for connectors added.
 4. Devices for higher optical power or with other type fiber or consigned fiber are also available; Devices can only work in the core of Double Cladding (DC) Fiber, Cladding Power must be stripped before connecting the device
 5. Package size may be different for different optical power and fiber types.

DIMENSION DRAWING



ORDERING INFORMATION (PN)

FCIR-	NNN	-3HP NN	-	(NN)	-	(C)	C	NN	-CC/CCC
	Center Wavelength	Optical Power		Optical Power P2		Fiber Type	Fiber Sleeve	Fiber Length	Connector Type
	975~975nm	05=500mW		1= 1W		E=10/125 SC Fiber	B= Bare fiber	05=0.5m	N=Without Connector
	980~980nm	1=1W		2= 2W		Q=20/130 DC Fiber	L= Loose Tube	10=1.0m	FC/APC=FC/APC Connector
	990~990nm	5=5W		5=5W		R=25/250 DC Fiber	2= 2mm Cable	15=1.5m	LC/PC=LC/PC Connector
	1000~1000nm	20=20W		Blank for P2=P1		Blank for HI1060 Fiber	3= 3mm Cable	20=2.0m	SC/UPC=SC/UPC Connector