

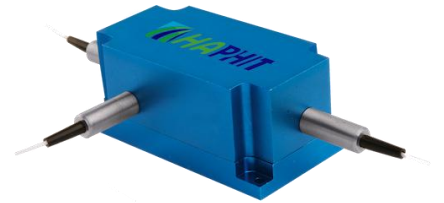
## 1070nm High Power 3-port PM Circulator for Pulse Power

### FEATURES

- High Isolation
- Low Insertion Loss
- Epoxy-Free Optical Path
- High Reliability and Stability
- Low Profile Packaging

### APPLICATIONS

- Fiber Optic Amplifiers
- Fiber Optic Instruments
- WDM Systems
- Dispersion Compensation
- Light Routing

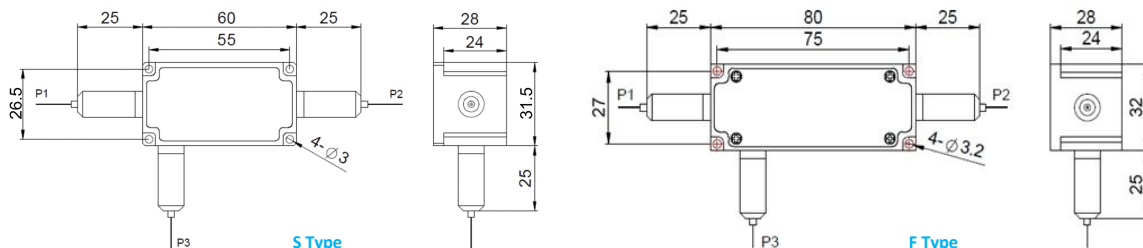


### SPECIFICATIONS

Parameter	Unit	Value
Center Wavelength	nm	1070
Operating Wavelength Range	nm	+/-10
Insertion Loss@ 23 °C (1→2 or 2→3)	(Typ.) dB	0.8
	(Max.) dB	1.5
Isolation @ 23 °C (3→2 or 2→1)	(Typ.) dB	25
	(Min.) dB	22
Work Mode	S Type	-
	F Type	-
		Can only work in slow axis
		Can work both in slow axis and fast axis
Optical Return Loss	dB	≥45
Extinction Ratio	dB	18
Fiber Type	-	PM980 Fiber, PM1060L Fiber (E) or PM1060L-FA Fiber (L) 10/125um PMDC Fiber (O), 15/130um PMDC Fiber (W) 20/130um PMDC Fiber (Q) or 25/250um PMDC Fiber (R)
Fiber Tensile Load	N	5
Max. Average Optical Power	W	0.5, 1, 2, 3, 5, 10, 15, 20, 25, 30
Max. Peak Power for pulse	kW	0.1, 1, 2, 3, 5, 10, 15, 20
Operating Temperature	°C	0~50
Storage Temperature	°C	-10~65

- Note:**
- Specifications are for device without connectors; Specifications may change without notice.
  - To add connectors, IL is 0.5dB higher, RL is 5dB lower, ER is 2dB Lower, Connector key is aligned to slow axis.
  - Only guarantee 1W continuous wave (CW) power thru testing for connectors added.
  - Devices for higher optical power or with other type fiber or consigned fiber are also available; Devices can only work in the core of Double Cladding (DC) Fiber, Cladding Power must be stripped before connecting the device.
  - Package size maybe different for different fiber type, optical power, etc.

### PACKAGE DIMENSION



### ORDERING INFORMATION (PN)

FPCR-	NNNN	-(C)	3H	NN	P NN	-(NN)	- C	C	NN	-CC/CCC
Center Wavelength	Work Mode	Average Power	Peak Power	Average Power P2	Fiber Type	Fiber Sleeve	Fiber Length	Connector Type		
1070=1070nm	F=F Type	05= 500mW	01=100W	1= 1W	2=PM980Fiber	B= Bare Fiber	05=0.5m	N=Without Connector		
	Blank for S Type	1= 1 Watts	1= 1kW	2= 2W	E=PM1060L Fiber	L= Loose Tube	10=1.0m	FC/APC=FC/APC Connector		
		5= 5 Watts	5=5kW	5=5W	Q=20/130 PMDC Fiber	2= 2mm Cable	15=1.5m	LC/PC=LC/PC Connector		
		20= 20 Watts	10=10kW	Blank for P2=P1	R=25/250 PMDC Fiber	3= 3mm Cable	20=2.0m	SC/UPC=SC/UPC Connector		

