

## 460~660nm 3-port Optical PM Circulator

### FEATURES

- High Isolation
- Low Insertion Loss
- Epoxy-Free Optical Path
- High Reliability and Stability
- Low Profile Packaging

### APPLICATIONS

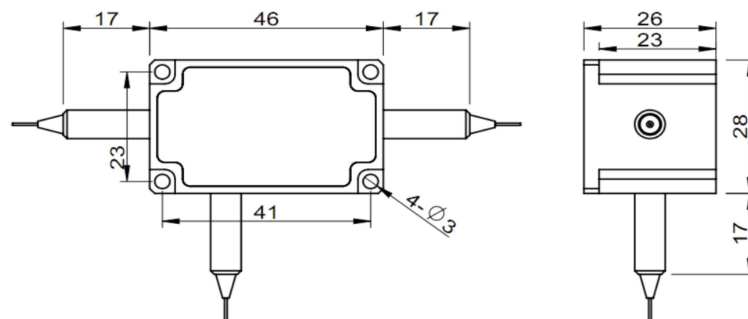
- Fiber Optic Amplifiers
- Fiber Optic Instruments
- WDM Systems
- Dispersion Compensation
- Light Routing

### SPECIFICATIONS

| Parameter                  | Unit   | Value              |                                     |     |
|----------------------------|--------|--------------------|-------------------------------------|-----|
| Center Wavelength          | nm     | 460, 488, 520, 532 | 635, 650, 660                       |     |
| Bandwidth                  | nm     | +/-5               |                                     |     |
| Insertion Loss@23°C        | (Typ.) | dB                 | 1.6                                 | 1.3 |
|                            | (Max.) | dB                 | 2.5                                 | 2.0 |
| Isolation@23°C             | (Typ.) | dB                 | 20                                  |     |
|                            | (Min.) | dB                 | 18                                  |     |
| Extinction Ratio           | dB     | ≥16                |                                     |     |
| Optical Return Loss        | dB     | ≥45                |                                     |     |
| Cross Talk                 | dB     | ≥40                |                                     |     |
| Work Mode                  | S Type | -                  | Can only work in slow axis          |     |
|                            | F Type | -                  | Can work both in Slow and Fast Axis |     |
| Fiber Type                 | -      | PM460-HP Fiber     | PM630-HP Fiber                      |     |
| Fiber Tensile Load         | N      | 5                  |                                     |     |
| Maximum Optical Power (CW) | mW     | 30                 |                                     |     |
| Operating Temperature      | °C     | 10~50              |                                     |     |
| Storage Temperature        | °C     | -10~65             |                                     |     |

- Note:**
1. Specifications are for device without connectors; Specifications may change without notice.
  2. To add connectors, IL is 1.2dB higher, RL is 5dB lower, ER is 2dB Lower, Connector key is aligned to slow axis.
  3. Devices for higher optical power or with other type fiber or consigned fiber are also available.

### PACKAGE DIMENSION



### ORDERING INFORMATION (PN)

|                          |                  |              |                   |                     |                     |                         |                 |
|--------------------------|------------------|--------------|-------------------|---------------------|---------------------|-------------------------|-----------------|
| <b>FPCR-</b>             | <b>NNN</b>       | <b>- (C)</b> | <b>3</b>          | <b>N</b>            | <b>C</b>            | <b>NN</b>               | <b>- CC/CCC</b> |
| <i>Center Wavelength</i> | <i>Work Mode</i> |              | <i>Fiber Type</i> | <i>Fiber Sleeve</i> | <i>Fiber Length</i> | <i>Connector Type</i>   |                 |
| 488~488nm                | F Type           |              | 2=250um PM Fiber  | B= Bare fiber       | 05=0.5m             | N=Without Connector     |                 |
| 532~532nm                | Blank for S Type |              |                   | L= Loose Tube       | 10=1.0m             | FC/APC=FC/APC Connector |                 |
| 635~635nm                |                  |              |                   | 2=2mm Cable         | 15=1.5m             | LC/PC=LC/PC Connector   |                 |
| 650~650nm                |                  |              |                   | 3=3mm Cable         | 20=2.0m             | SC/UPC=SC/UPC Connector |                 |

