

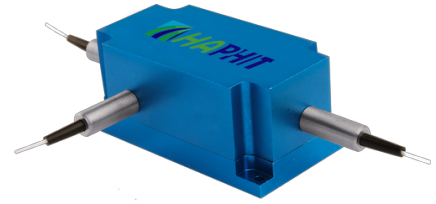
## 750~810nm 3-port PM Optical Circulator

### FEATURES

- High Isolation
- Low Insertion Loss
- Epoxy-Free Optical Path
- High Reliability and Stability
- Low Profile Packaging

### APPLICATIONS

- Fiber Optic Amplifiers
- Fiber Optic Instruments
- WDM Systems
- Dispersion Compensation
- Light Routing

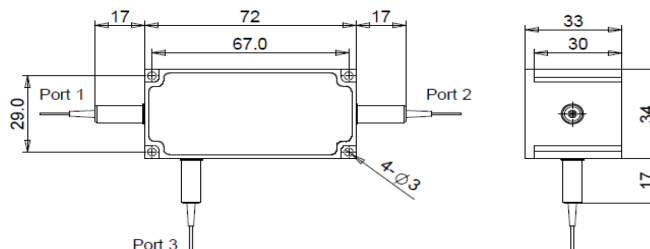


### SPECIFICATIONS

Parameter	Unit	Value	
Working Wavelength	nm	750±10, 780±10, 793±10, 808±10	
Insertion Loss@23°C	(Typ.)	dB	1.7
	(Max.)	dB	2.5
Isolation@23°C	(Typ.)	dB	19
	(Min.)	dB	16
Extinction Ratio	dB	≥16	
Optical Return Loss	dB	≥45	
Cross Talk	dB	≥40	
Work Mode	S Type	-	Can only work in slow axis
	F Type	-	Can work both in Slow and Fast Axis
Fiber Type	-	PM850 Fiber or PM780-HP Fiber	
Fiber Tensile Load	N	5	
Maximum Optical Power (CW)	W	0.3, 0.5, 1, 2, 3, 5, 10, 15, 20	
Operating Temperature	°C	0~50	
Storage Temperature	°C	-10~65	

- Note:**
1. Specifications are for device without connectors; Specifications may change without notice.
  2. To add connectors, IL is 0.7dB higher, RL is 5dB lower, ER is 2dB Lower, Connector key is aligned to slow axis.
  3. Only guarantee 1W continuous wave (CW) power thru testing for connectors added.
  4. Devices for higher optical power or with other type fiber or consigned fiber are also available.

### PACKAGE DIMENSION



### ORDERING INFORMATION (PN)

<b>FPCR-</b>	<b>NNN</b>	<b>-</b>	<b>(C) 3HP</b>	<b>NN</b>	<b>-</b>	<b>N</b>	<b>C</b>	<b>NN</b>	<b>-</b>	<b>CC/CCC</b>
<i>Center Wavelength</i>	<i>Work Mode</i>		<i>Optical Power</i>	<i>Fiber Type</i>		<i>Fiber Sleeve</i>		<i>Fiber Length</i>		<i>Connector Type</i>
750-750nm	F=F Type		03= 300mW	2=PM850 Fiber		B= Bare fiber		05=0.5m		N=Without Connector
780-780nm	Blank for S Type		1= 1 Watts	7=PM780-HP Fiber		L= Loose Tube		10=1.0m		FC/APC=FC/APC Connector
790-790nm			3= 3 Watts			2=2mm Cable		15=1.5m		LC/PC=LC/PC Connector
808-808nm			10= 10 Watts			3=3mm Cable		20=2.0m		SC/UPC=SC/UPC Connector