

406/488/560/635nm PM WDM Combiner Filter

FEATURES

- High Isolation
- Low Insertion Loss
- Epoxy-Free Optical Path
- High Reliability and Stability
- Low Profile Packaging

APPLICATIONS

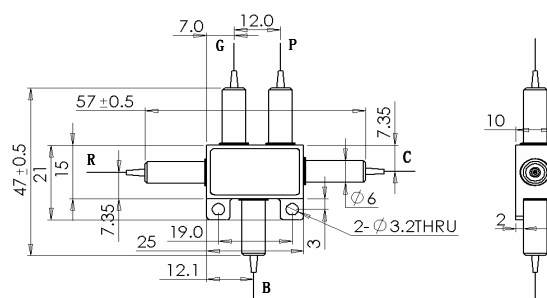
- Broadband Systems
- Optical Amplifying Systems
- Telecommunication Networks
- Metro Networks
- CATV Networks

SPECIFICATIONS

Parameters	Unit	Value	
Wavelength Range (Port P)	nm	406	
Wavelength Range (Port B)	nm	488	
Wavelength Range (Port G)	nm	560	
Wavelength Range (Port R)	nm	635	
Insertion Loss	dB	≤4.5	
Optical Return Loss	dB	≥45	
Extinction Ratio	dB	≥16	
Fiber Type	Common & 406nm Port	-	PM S406-XP Fiber
	488nm Port & 532nm Port	-	PM 460-HP Fiber
	635nm Port	-	PM 630-HP Fiber
Fiber Tensile Load	N	5	
Maximum Optical Power (CW)	mW	100	
Operating Temperature	°C	23~45	
Storage Temperature	°C	0~75	

- Note:**
1. Specifications are for device without connectors; Specifications may change without notice.
 2. To add connectors, IL is 1.5dB higher, RL is 5dB lower, ER is 2dB Lower, Connector key is aligned to slow axis.
 3. Devices for higher optical power or with other type fiber or consigned fiber are also available.

PACKAGE DIMENSION



ORDERING INFORMATION (PN)

FPWM-40485663 -

C

NN

-CC/CCC

Fiber Sleeve

- B**= Bare Fiber
- L**= Loose Tube
- 2**= 2mm Cable
- 3**= 3mm Cable

Fiber Length

- 05**=0.5m
- 10**=1.0m
- 15**=1.5m
- 20**=2.0m

Connector Type

- N**=Without Connector
- FC/APC**=FC/APC Connector
- LC/PC**=LC/PC Connector
- SC/UPC**=SC/UPC Connector