

750~860nm Pump Laser Protector with Isolator

FEATURES

- High Isolation
- Low Insertion Loss
- High Reliability and Stability

APPLICATIONS

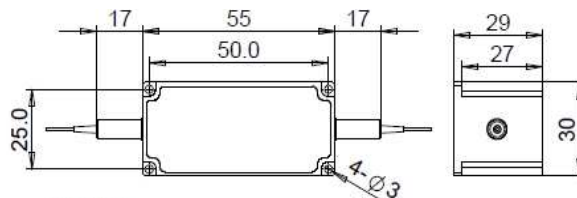
- Broadband Systems
- Optical Amplifying Systems
- Telecommunication Networks

SPECIFICATIONS

Parameters	Unit	Standard	High Signal Isolation
Pump Laser Wavelength	nm	750±10, 780±10, 793±10, 808±10, 830±10, 850±10	
Blocking Signal Wavelength	Type 5	nm	1500~1620
	Type 2	nm	1020~1120&1500~1620
	Type 8	nm	880~1100
	Type 9	nm	1900~2070
Pump Insertion Loss@23°C	dB	≤1.5	≤1.8
Backward Pump Isolation@23°C	dB	≥22	
Backward Signal Attenuation	dB	≥25	≥50
Configuration	D Type	-	2-port
	Y/X Type	-	3/4-port, (Backward Signal/Pump Guide Out)
Fiber Type at 3 rd /4 th Port (Only for Y/X Type)	-	Same Fiber or 105/125um MM Fiber	
Return Loss	dB	≥50	
PDL	dB	≤0.2	
Fiber Type	-	HI780 Fiber or 780-HP Fiber	
Fiber Tensile Load	N	5	
Max. Optical Power (Pump+Signal, CW)	W	0.3, 0.5, 1, 2, 3, 5, 10, 15, 20	
Max. Backward Signal/Pump Power (CW)	W	0.3, 0.5, 1, 2, 3, 5, 10	
Operating Temperature	°C	0~50	
Storage Temperature	°C	-20~75	

- Note:**
- Specifications are for device without connectors; Specifications may change without notice.
 - To add connectors, IL is 0.7dB higher, RL is 5dB lower.
 - Only guarantee 1W continuous wave (CW) power thru testing for connectors added.
 - Devices for higher optical power or with other type fiber or consigned fiber are also available; Devices can only work in the core of Double Cladding (DC) Fiber, Cladding Power must be stripped before connecting the device.
 - Suggest to use Y/X type if blocked optical power is >1W.

DIMENSION DRAWING



ORDERING INFORMATION (PN)

FSPI- NN	- N	(C)	C	(C)	- P NN	- (NN)(NN)	-(C)	C	NN	- CC/CCC
Center Wavelength	Signal Type	Signal Isolation	B.Signal Fiber	B.Pump Fiber	Optical Power	B.Signal/ B.Pump Power	Fiber Type	Fiber Sleeve	Fiber Length	Connector Type
780-780nm	9-Type 9	I=High Isolation	Y= Same Fiber	Y= Same Fiber	05=500mW		7=780HP Fiber	B= Bare fiber	05=0.5m	N=Without Connector
793-793nm	5-Type 5	Blank for Standard	A=105/125um Fiber	A=105/125um Fiber	1= 1W	05= 500mW	Blank for HI780 Fiber	L= Loose Tube	10=1.0m	FC/APC=FC/APC Connector
808- 808nm	2-Type 2		N=None	Blank for None	5= 5W	1= 1W		2= 2mm Cable	15=1.5m	LC/PC=LC/PC Connector
830- 830nm	8-Type 8				10=10W	Blank for 300mW		3= 3mm Cable	20=2.0m	SC/UPC=SC/UPC Connector